

SCORPIONTRACK

S7 ADVENTURE USER GUIDE

REVISION 01 | 06.2026

SCORPION[®]
AUTOMOTIVE



**MADE IN
BRITAIN**

CONTENTS

1. INTRODUCTION	03
1.1 Product Overview	03
1.2 Product Features	04
2. GETTING STARTED	05
2.1 How To Get Set Up	05
2.2 Monitoring Subscription	06
2.3 Vehicle Management	07
2.4 Live Map	08
2.5 Vehicle Ownership	08
2.6 Installation Certificate (UK Only)	09
2.7 Safe Zones	10
2.8 Arming Your S7 Adventure	11
3. VEHICLE THEFT	13
3.1 Automated Alerts	13
3.2 Theft Procedure	13
4. CUSTOM ALERTS	15
4.1 Alert Options	15
4.2 Geofence Alerts	15
4.3 How To Set Up An Alert	17
5. REPORTING	19
5.1 Journey Reports	19
5.2 Driver Behaviour	21
6. SCORPIONTRACK APP	23
6.1 Mobile App Overview	23
6.2 Multiple User Access	23
6.3 How To Manage Your Subscription	24
6.4 How To Manage Dashboard Alerts & Modes	24
6.5 How To Set Up Arming Schedules	27
6.6 How To Set Up Safe Zones	27
7. SPECIFICATIONS	28
7.1 Tracker Internal Battery	28
7.2 Troubleshooting	28
7.3 Warranty	29
7.4 Terms & Conditions	29
8. CONTACTS	29
9. DECLARATION OF CONFORMITY	29

1. WELCOME

THANK YOU FOR YOUR PURCHASE

Your vehicle is now secured with the [ScorpionTrack S7 Adventure Tracker](#).

Why choose Scorpion? There's a good chance you made a significant investment in your vehicle, so why not protect it? Here at Scorpion, we offer a wide range of security solutions to suit your security needs. Boasting a 96% recovery rate, along with a dedicated 24/7 Vehicle Recovery team, you can relax knowing that your pride and joy is protected against sudden attack and potential theft.

Within this user guide, you will find all the relevant information that you need to ensure your tracking device provides you with the utmost security and length of service. It will give you a brief overview of the product and provide examples of where a particular feature may be of value to you.

After consulting this guide (including the FAQs at the back of the guide), if you have any queries that are still unanswered then please contact our Scorpion Team on 01257 249 928 to speak with our Customer Service Team.

1.1 PRODUCT OVERVIEW

ScorpionTrack S7 Adventure Tracker actively protects your vehicle against unauthorised movement using advanced technology along with movement detection sensors hidden within the vehicle. It is an advanced vehicle tracking solution with 24/7 monitoring, all year round, to provide security and peace of mind whilst offering a comprehensive range of convenience features for life on the road.

These are User controlled trackers and as such it will be your responsibility to set when the monitoring is 'Armed' and 'Disarmed'. This can be done by accessing your account on either the app or the website. If your tracker is Armed and movement outside of your Safe Zones is detected you will receive a phone call from our Vehicle Recovery team. So, ensure the tracker is disarmed when you are moving the vehicle yourself to avoid false alerts. If upon receiving a phone call from our Vehicle Recovery Team you confirm the vehicle as stolen then our team will upgrade the Alert to Alarm, and begin the process of trying to recover your vehicle.



24/7 MONITORING



LIVE TRACKING



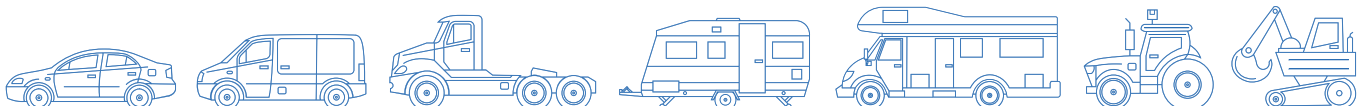
CUSTOMISABLE THEFT ALERTS



MULTI-NETWORK ROAMING SIM

1.2 PRODUCT FEATURES

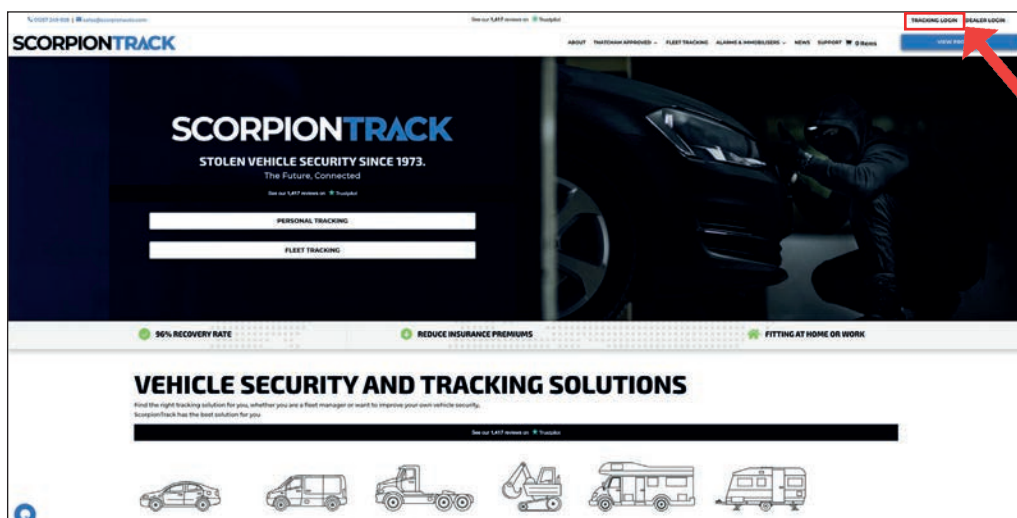
FEATURES	S7
24/7 Theft Monitoring	✓
Thatcham Approved	✓
Mutli-Network Roaming SIM	✓
ScorpionTrack App Access	✓
Tow Away & Tamper Alerts	✓
Automatic Health Checks	✓
2-Year Warranty	✓
Low Current Draw (<5ma)	✓
Transferable To New Vehicle	✓



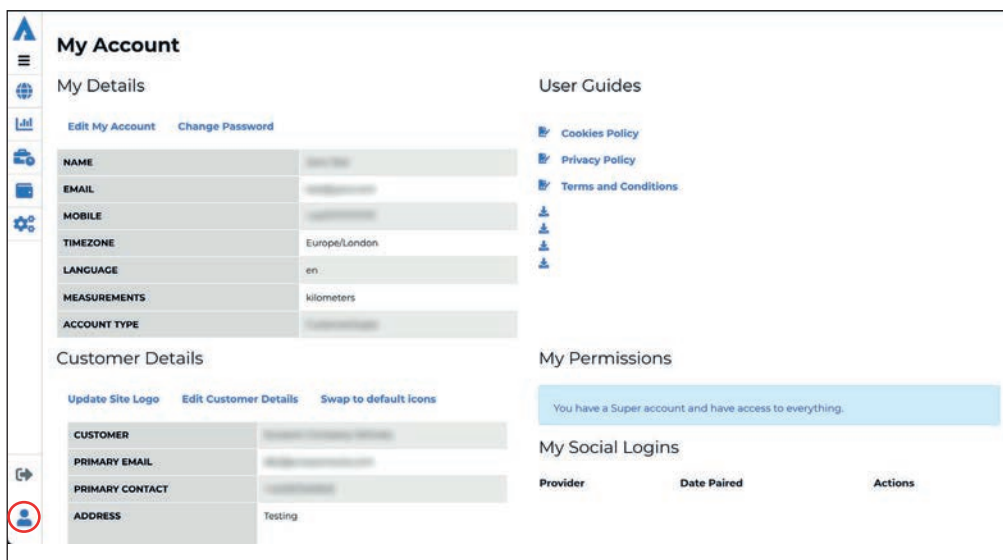
2. GETTING STARTED

2.1 HOW TO GET SET UP

As part of the installation, you will receive an email containing login details which provides you access to the ScorpionTrack website scorpiontrack.com. If you haven't received this email or require a duplicate, please call the ScorpionTrack Helpdesk on **01257 249 928**. To access our online system on our website, click **'Tracking Login'** at the top right of your screen and then enter your login details. You will need to **Authenticate** your account following the link sent in one of your welcome emails prior to this step. When logged in as the main Admin User, you can then add additional User's and give them certain Permissions to restrict their access within the account and dictate what they can and cannot see/edit.

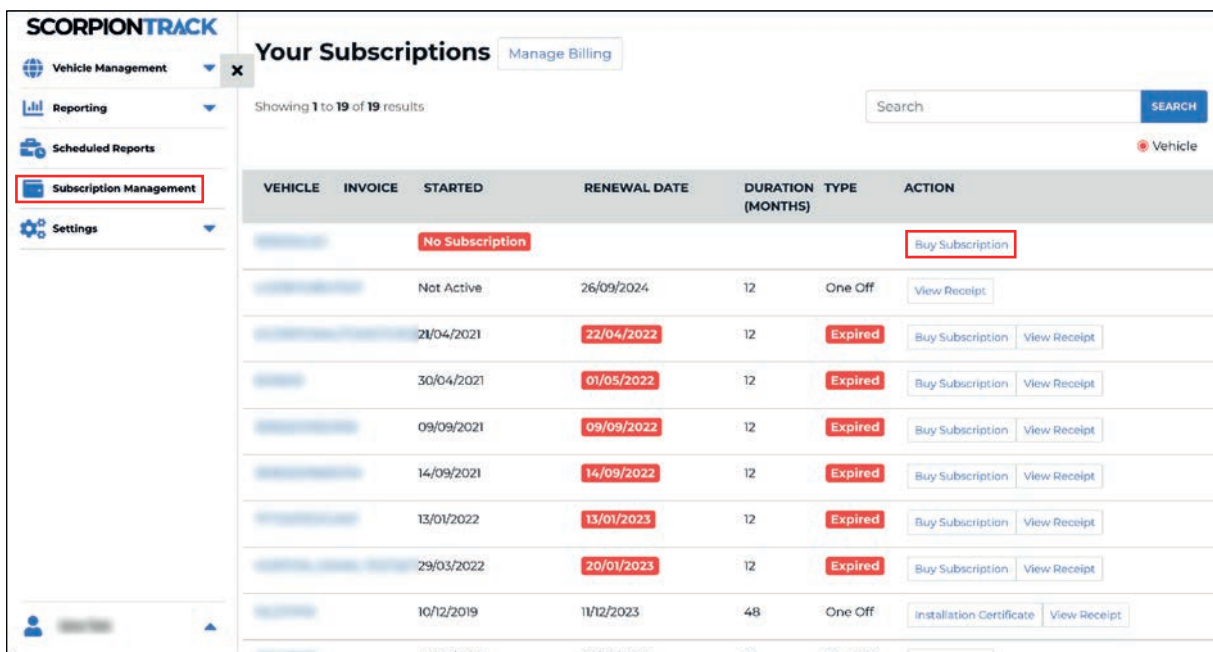


It's vitally important that your contact details are kept up to date on the ScorpionTrack System to ensure that our ScorpionTrack Vehicle Recovery team are able to contact you at any time of day without delay, should an alert be generated for your vehicle. At the earliest opportunity, please log in to the ScorpionTrack website and check the contact information that we have for yourself. This can be accessed by clicking on **'My Account'**, far bottom left as highlighted in the picture below.



2.2 MONITORING SUBSCRIPTION

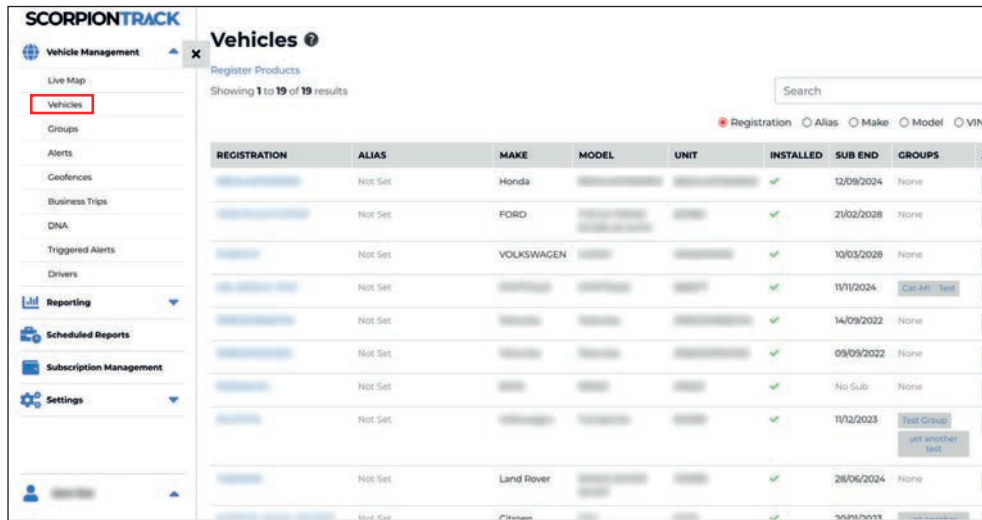
ScorpionTrack has a monitored service with staff available 24 hours a day, 365 days a year to support you in the event of vehicle theft. To benefit from this, there is an annual fee which can be paid on our website or over the phone by calling the Subscription Team on **01257 249 928**. The current pricing for our subscription service can be found on our website or you can call our Subscriptions Team for a full breakdown of pricing. If you would like to purchase your monitoring subscription on our website, please log into the online portal and click 'Subscription Management' on the left-hand menu. This will then take you to the 'Subscriptions' page that shows all your vehicles. To purchase a subscription, you will need to navigate to the vehicle you want this to be applied to and in the far right column click on the 'Buy Subscription' option.



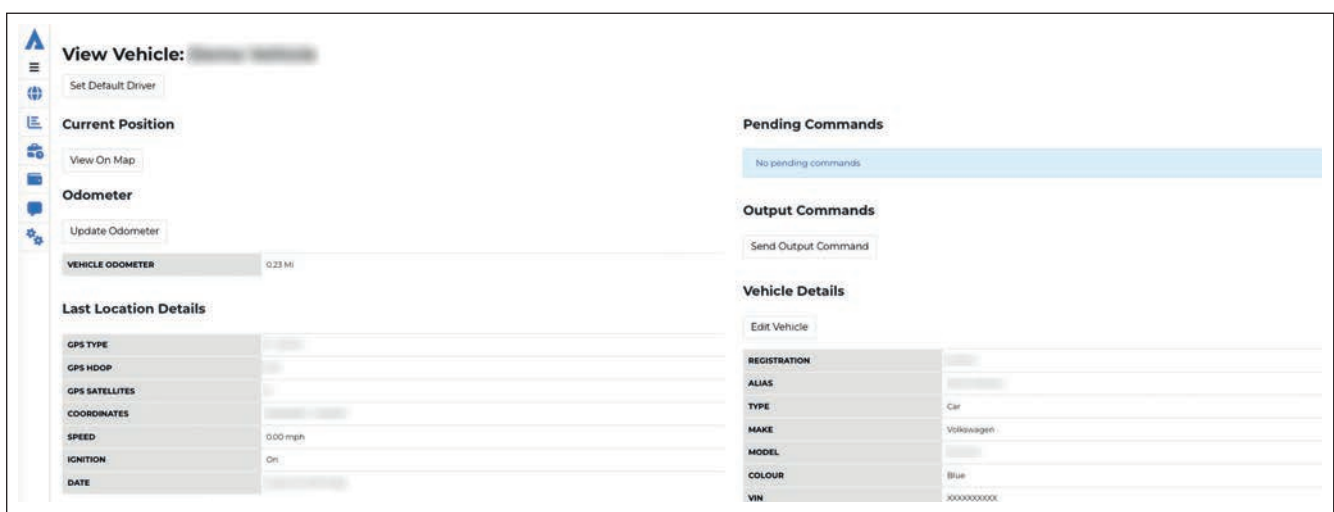
Any ScorpionTrack S7 Adventure tracker will only provide theft detection whilst the monitoring subscription is active, with a minimum term of **12 months** as stated in the Terms & Conditions. If the payments for the subscription aren't received or renewed, no alerts will be generated with no vehicle theft protection in place. The live location of your vehicle will also not be visible on the website or mobile app. Furthermore, if you have declared that the tracker has been fitted to your insurer, non-payment of the monitoring subscription may also impact negatively on your insurance cover in the event of theft.

2.3 VEHICLE MANAGEMENT

When accessing the ScorpionTrack app on our website, by default you will land on the **'My Vehicles'** page in the **'Vehicle Management'** section, which can also be found by navigating the left side menu. Here you can search for vehicles that you have registered under your account, view and edit your vehicles.



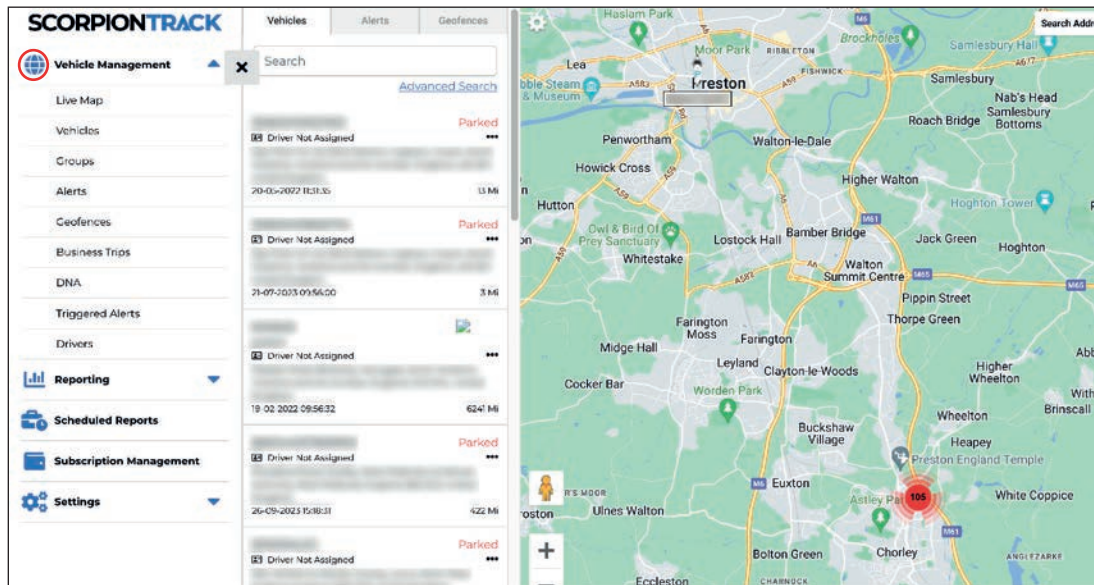
From this page, you can edit your vehicle details, download the installation certificate or email the certificate to an email address. Furthermore, you can manage the 'Vehicle Modes' such as turning on **'Armed Mode'** so that if the vehicle is driven away in a theft, it alerts our Vehicle Recovery Team. You can edit the vehicle and set the Alias to help track your vehicles via driver name or vehicle name rather than the registration.



Also, on this page you can toggle **'MOT Reminders'** and **'Tax Reminders'** on and off. You can also see an overview of the Subscription on the vehicle to help keep on track of any that may be due. Lastly, there is the **'Calendar'** feature which can be used to record any important dates linked to certain vehicles and these can be set up with a reminder.

2.4 LIVE MAP

The **'Live Map'** can also be found under **'Vehicle Management'** which shows you all the vehicles registered to your account and their last known location. Your vehicles are listed on the left next to the side menu, which you interact with to show you where the vehicle is. It will also show the current status of the vehicle, whether it is parked in a location or it is moving.



All the map functions including the zoom button and the view type are all on the top right of the map. If you right click on the map, there will also be a list of options available, which includes the option of creating a geofence (**this will be explained later in the guide**).

2.5 VEHICLE OWNERSHIP

If you are to purchase a new vehicle which has one of our trackers fitted, you will be required to get in touch with our Subscriptions team via email at subscriptions-team@scorpionauto.com or via telephone **01257 249 928** to request a **'New Ownership Form'**. This is an online form that must be filled out with the new customer's details to prevent any issues in the event of the vehicle being stolen. This is also the same if you are to purchase a new vehicle from a dealership that already has the ScorpionTrack tracker fitted to it.

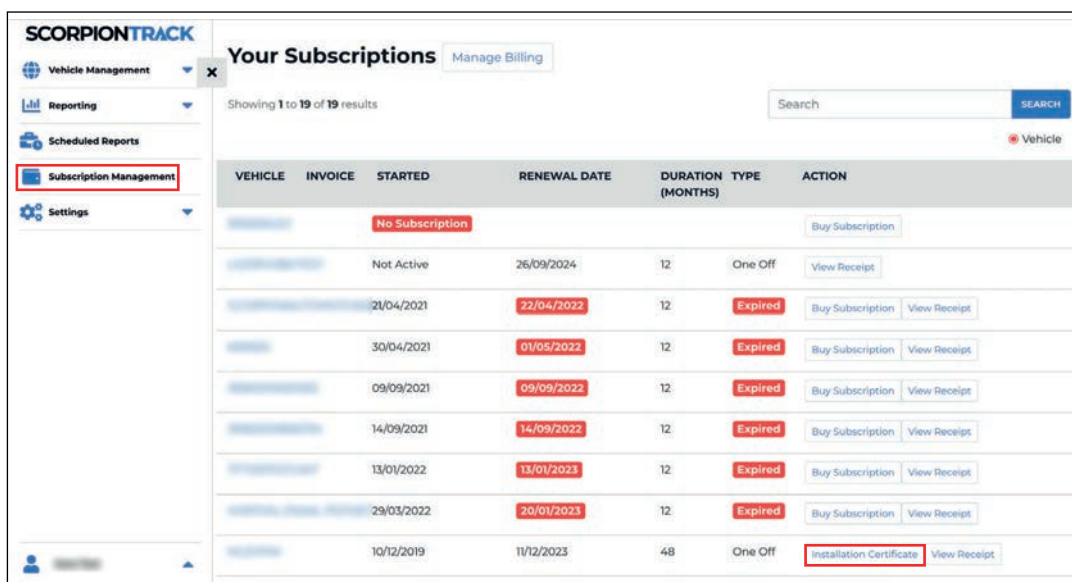
When filling out the **'New Ownership Form'**, you will also be required to attach a copy of the front of the V5 document and also a **'Bill of Sale'** or proof of purchase for that vehicle in your name and details. Once you have filled in this form and submitted it, this will be emailed to our Subscriptions team who will process it and set up the updated account on the ScorpionTrack online system.

If you are selling your vehicle, you will need to fill out a **'Sold Vehicle Form'** to declare that you no longer own the vehicle and notify the new owner to make contact with our Subscriptions Team. If you have any questions around outstanding subscriptions then please contact our Subscriptions Team to discuss.

Please do not manually amend the contact information in your ScorpionTrack Account to the new customer's details as this will not be correctly updated on our system and may allow them access to your personal details along with your journey history.

2.6 INSTALLATION CERTIFICATE (UK ONLY)

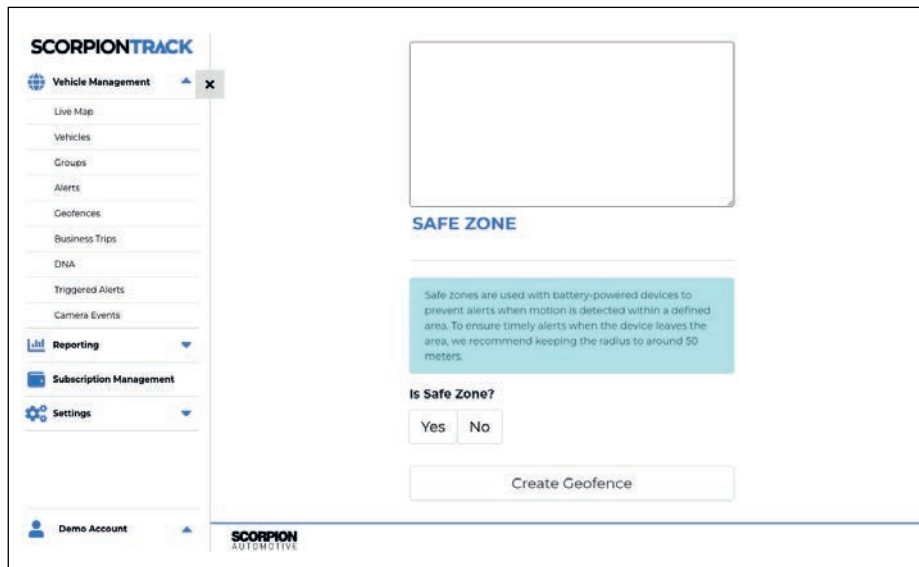
As all our units are insurance industry approved, they may qualify the owner for a discount on their vehicle's insurance. If the insurer requires an installation certificate as proof that the tracker has been fitted, a copy may be downloaded from our ScorpionTrack website in the **'Your Subscriptions'** page as shown below, and is only available once the monitoring subscription has been paid and activated.



2.7 SAFE ZONES

Safe Zones let you mark trusted locations like your home or workplace where alerts won't be triggered. This helps avoid unnecessary notifications when your vehicle is in a place you know is safe. You'll need to set up at least one Safe Zone before arming your vehicle.

To set one up, go to Geofences, click **'Create Geofence'**, and set the Safe Zone toggle to **'Yes'**. Once saved, you can reuse or edit your Safe Zones at any time. For best results, keep them small—around 150 metres wide.

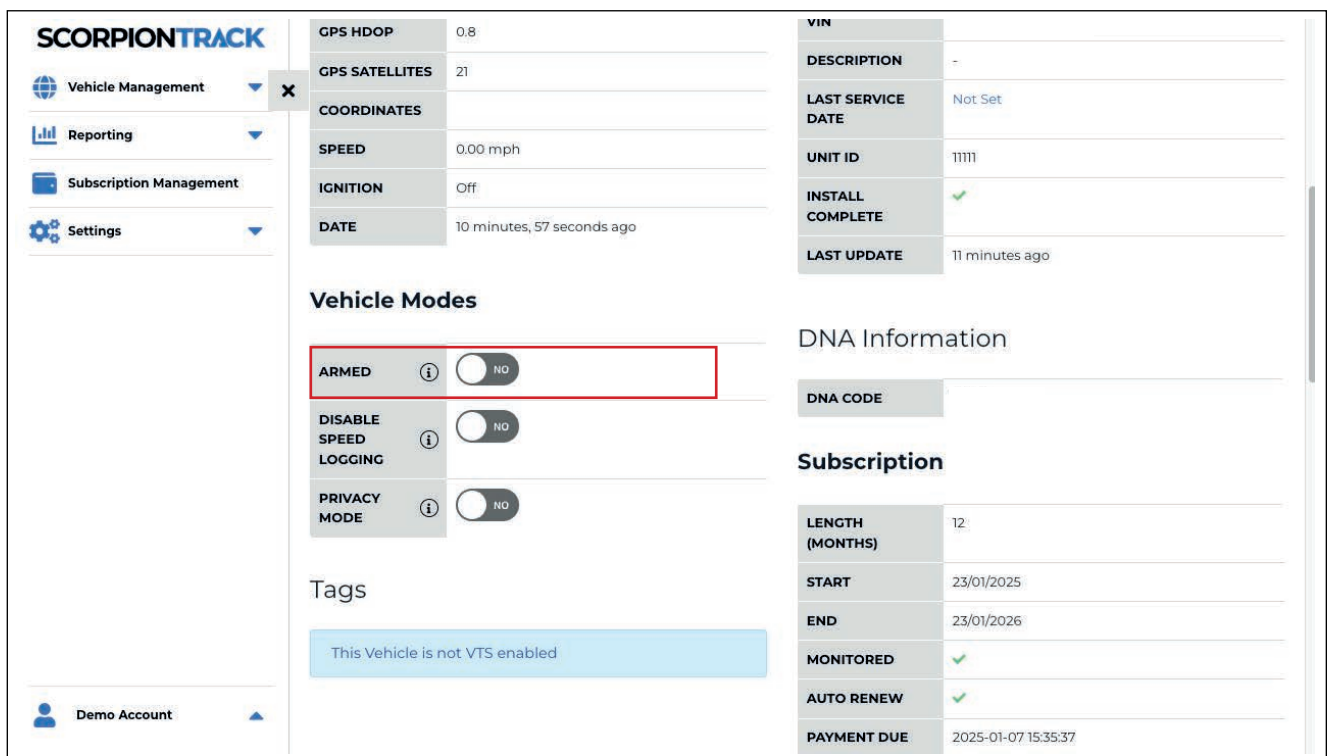


2.8 ARMING YOUR S7 ADVENTURE

You can arm your S7 Adventure tracker using either the website or the app. Arming activates alerts, so you should only do this when you're not planning to drive the vehicle such as when it's parked at home or work. This helps keep alerts reliable and reduces the chance of false notifications.

Whether you're using the **website** or the **app**, tapping **'Arm'** will bring up a prompt asking if you'd like to use your existing Safe Zones or create a new one. If you choose to create a new one, you'll be taken to the **'Create Geofence'** page. If no Safe Zones are set up, you won't be able to arm your S7 Adventure until one has been created.

On the website, arming is done via an **on/off toggle** next to **'Arm'**. On the app, it's a single **'Arm'** button, which changes to **'Disarm'** once the system is armed.

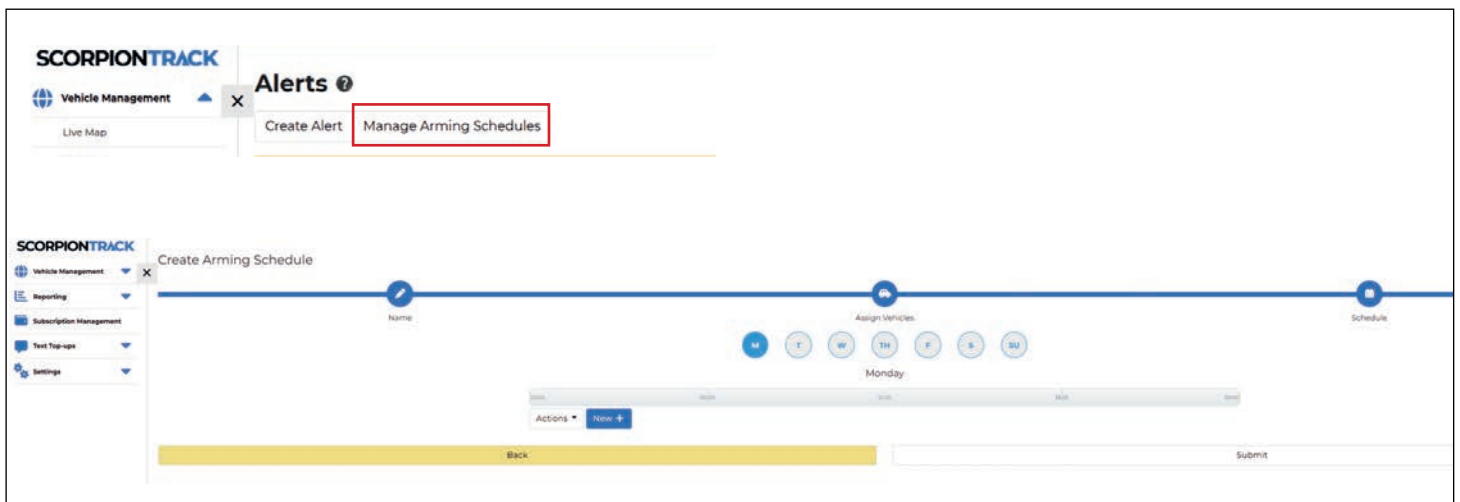


2.9 SCHEDULED ARMING

You can setup your S7 Adventure tracker to arm and disarm via a customisable schedule. This means that your S7 Adventure will automatically **arm and/or disarm** at pre-set times on pre-set days of the week. This helps reduce false alerts if you tend to follow the same vehicle usage pattern.

Scheduled Arming can be setup via the website or app.

On the website, Schedule Arming is setup under **Vehicle Management > Alerts > Manage Arming Schedules**.

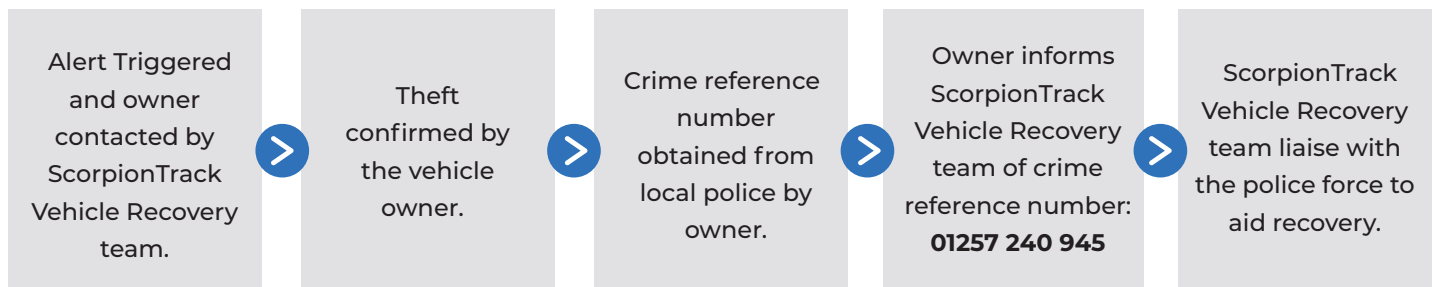


3. VEHICLE THEFT

3.1 AUTOMATED ALERTS

Once you have a subscription in place, the system will be active and monitored 24/7. In the event of theft, the tracker will generate an automatic alert that is sent to our 24/7 Vehicle Recovery team if any of the following is detected:

- Vehicle battery disconnected (including disconnection of tracking system from vehicle) or where the battery voltage drops significantly.
- Vehicle moves more than 150m from last known position when in an “ARMED” state.



3.2 THEFT PROCEDURE

In the event of theft, please do the following:



When a tracking unit goes into ALERT, in order for us to establish if a theft has taken place, we must first contact you and this is why it is vital that you provide us with accurate contact details. We will also have to confirm your identity and will use the security question provided to do this. In the event there is no security question we will ask for you to confirm some personal account information.

Once a theft has been established and your identity confirmed, we will continue to monitor your vehicle while you contact the police and obtain a crime reference number. This number is vital for us to ensure that we are able to keep the police up to date on the vehicle's movements. When your vehicle has been located, you will need to liaise directly with the police on how quickly you are able to recover your vehicle, as there are a number of instances where the police may need the vehicle in order to further their enquiries which are entirely out of our control.

Please note: The ScorpionTrack Vehicle Recovery Team will use their best efforts to recover your vehicle, working with the relevant local Police Authority. The Police response to a reported vehicle may vary depending on the resources available and the availability of location data from the tracking unit. Most recoveries happen within the first 2 hours of theft but every theft is different and the recovery may take longer or may not even be possible.

The fitment of a tracking system also does not guarantee recovery of a stolen vehicle, but does increase the possibility. The normal precautionary measures such as utilising secondary security, parking in well-lit areas and securing the keys, should still be taken.

4. CUSTOM ALERTS

4.1 ALERT OPTIONS

As part of your ScorpionTrack monitoring subscription, you will also have access to managing and customising dashboard alerts for your vehicles, which includes a range of Standard alerts and Geofence alerts. Please note that these alerts are not automatically set up on your account once it has been created, so you will need to manually create these. Upon triggering, these alerts can send either an app notification, email notification or SMS to a defined User on the account depending upon what you have set up (text bundle payment required for SMS). There is a detailed explanation of how to create these alerts in **section 4.3**.

The range of alerts which may be beneficial for you include:

Low Battery Alert

The ScorpionTrack unit monitors the condition of the vehicle battery, and if required it will send a 'Low Battery Warning' notification directly to the selected User on the account when the vehicle battery drops below a predetermined level. If you receive the warning, it is important that you take action to charge the vehicle battery.

Battery Disconnect Alert

If the battery was to be disconnected a 'Battery Disconnect' alert can be generated to send a notification to a defined User. This would be generated if there is complete cut of power, so either the battery is disconnected or the tracker is removed. If you have a monitored subscription, this would also generate a phone call from our Vehicle Recovery team.

Ignition On Alert

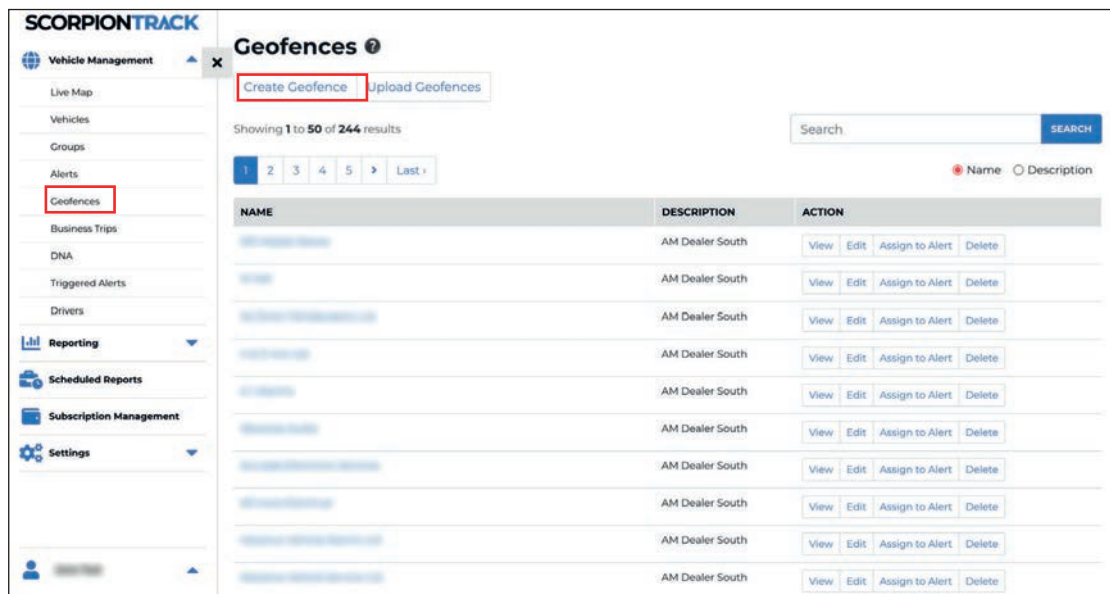
The tracker can also send a notification every time the vehicle's ignition is switched on. This is useful as an early warning if someone is trying to steal the vehicle and the unit is in a disarmed state.

4.2 GEOFENCE ALERTS

A Geofence is a virtual 'electronic' perimeter zone that you set up to report on your vehicle's entry and exit from that location. Geofences are an extremely helpful tool, especially if used for fleet purposes, and they are easy to set up. Example uses for a geofence:

- To monitor if and when your vehicle has exited the dealership when being serviced.
- A reminder to pay toll or congestion charges for travelling on chargeable roads and zones.

Before creating a Geofence Alert, you must create the Geofence on the live map that will be used to trigger the alert. To do this, navigate to the **'Geofences'** tab in the menu and click **'Create Geofence'**.



Creating a Custom-Shaped Geofence

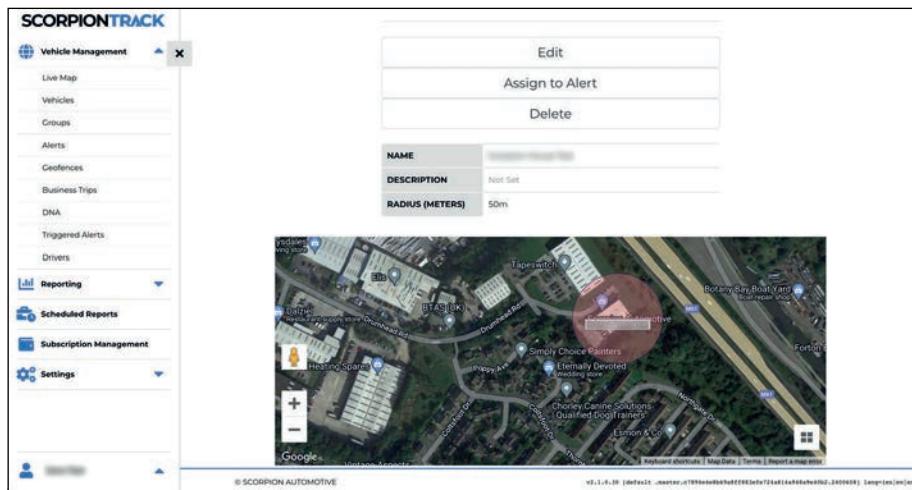
To create a precise, custom-shaped geofence click on the location in the live map (you can use the satellite view on the map to aid accuracy) then using the mouse, left-click at points around your desired geofence area until the points join up and create a 'net' around the location.

If you wish to remove a point, simply hover over that point, right click and it will be removed.

Note: Set your geofences approx 10 metres wider than the actual perimeter you wish to create. This will avoid unwanted alerts as a result of 'satellite drift' or where there is an occasional breach to the perimeter that you do not wish to monitor.

Creating a Circular Geofence

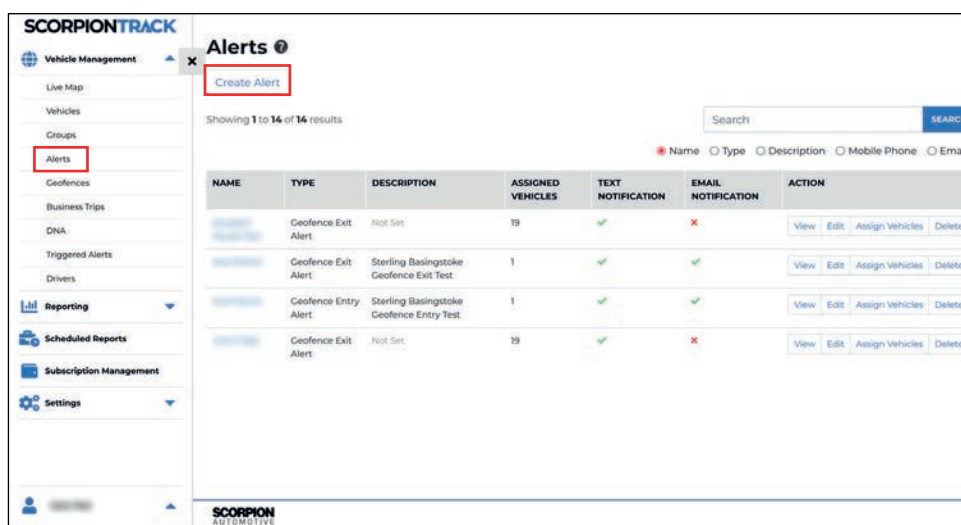
Click on **'Geofence'** in the menu on the left side of your screen, and then click **'Create Geofence'**. Or, in **'Live Map'** right click anywhere on the map and click 'create geofence' there. Using the first method, enter a postcode, town, or city name in the search bar. Hit enter on your keyboard and the map location will update accordingly, then simply left click where you want the circular geofence. You can then increase and decrease the size of this in the options below the map.



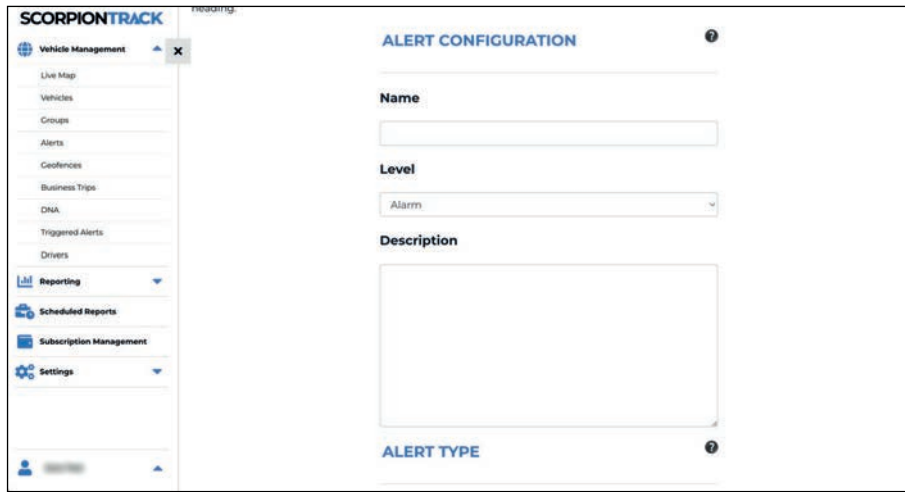
4.3 HOW TO SET UP AN ALERT

To set up an alert, or manage your current alerts, please login to our website and click on the side menu on the left side of your screen, and click on **'Alerts'** under **'Vehicle Management'**.

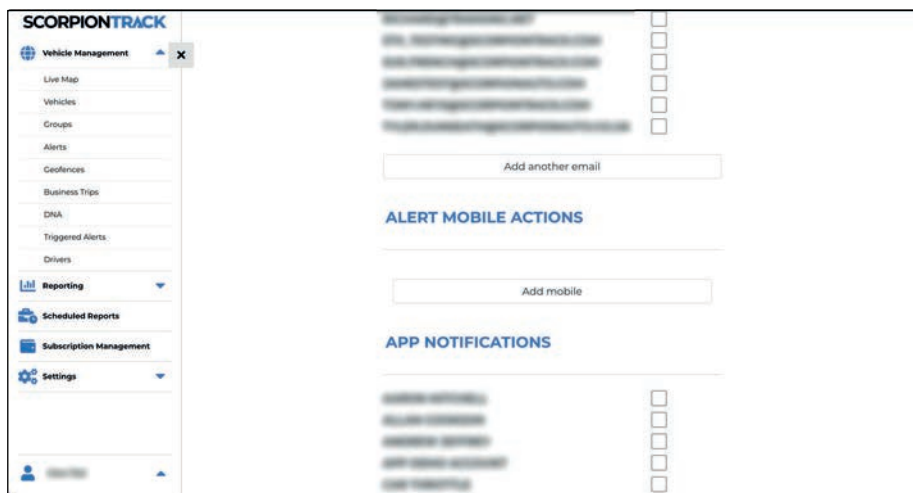
When this has opened, it will bring you to a dashboard of alerts. To then create an alert of your choice, click on the highlighted **'Create Alert'** button above the table on the left side.



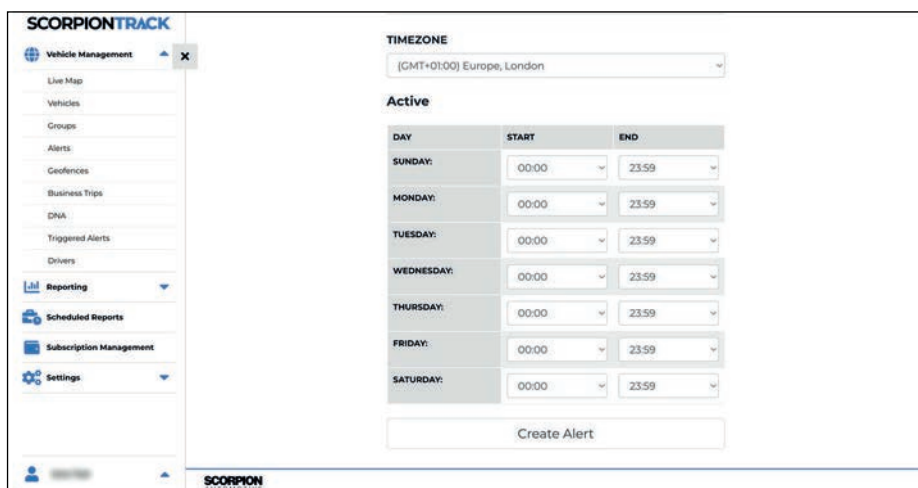
You will need to name the alert, add the level of the alert and a description of what the alert is for. Then scroll down to the section **'Alert Type'**, on the drop-down, click the alert type you want to create as displayed in the below picture.



Underneath this, you select either an email address that you wish the notification to be sent to, a mobile number for text alerts (Text Bundle Payment Required) or you can also select **'App Notifications'** if you wish to be notified this way.



You can then choose to schedule the times you want the alert to be active if you wish. After this, click the **'Create Alert'** button at the bottom. This will then create an alert for your vehicles. By default it will assign to all vehicles, which can be edited from the **'Alerts'** page.



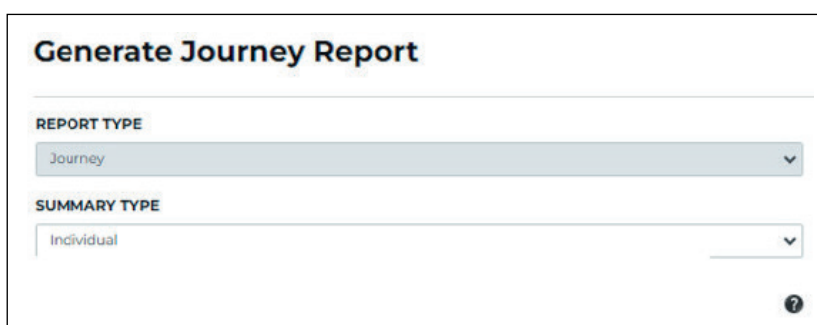
5. REPORTING

In your ScorpionTrack App account, you can run a range of reports to help you monitor and manage your vehicles more easily. This guide will give you a brief look at the most commonly used 'Journey Reports' feature, and provide an insight of how to interpret the Driver Behaviour reports.

5.1 JOURNEY REPORT

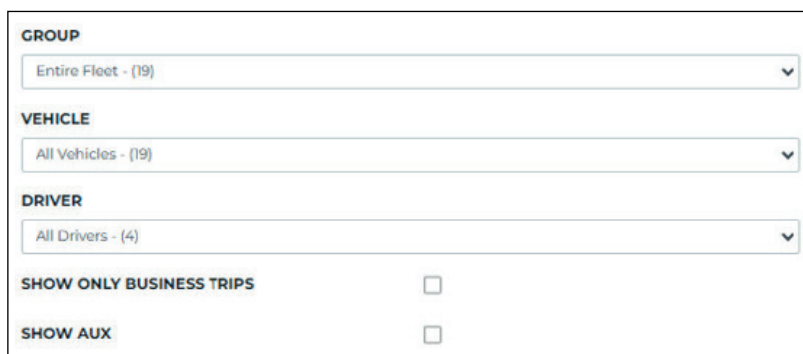
This gives you the ability to view the journeys made by the vehicles on your account and is probably the most used report available to you.

This is accessed in the left menu bar select **'Reporting'**, then select **'Journey'** and fill out as below:



The screenshot shows a form titled "Generate Journey Report". It has two main sections: "REPORT TYPE" with a dropdown menu currently set to "Journey", and "SUMMARY TYPE" with a dropdown menu currently set to "Individual". A small question mark icon is located at the bottom right of the form.

To change the type of report, select the option under **'Report Type'**. And to define a report and show individual journeys, all daily journeys, or all journeys in a month, click the dropdown menu under **'Summary Type'**. If you need more help with these respective fields, select the **'Question Mark'** symbols.



The screenshot shows the filter section of the report form. It includes three dropdown menus: "GROUP" (set to "Entire Fleet - (19)"), "VEHICLE" (set to "All Vehicles - (19)"), and "DRIVER" (set to "All Drivers - (4)"). Below these are two checkboxes: "SHOW ONLY BUSINESS TRIPS" and "SHOW AUX", both of which are currently unchecked.

Further down the page, you will need to select whether you want to see the entire fleet or a certain group of vehicles in the **'Group'** dropdown, whether you want to see all vehicles or a specific vehicle in the **'Vehicle'** dropdown, and if you want to see all Drivers on the account or a specific Driver in the **'Driver'** dropdown.

If you want the report to show journeys that are marked as Business Trips, select the tick box on the right of **'Show Only Business Trips'**. To see any connected Auxiliaries that have triggered on any of the vehicles, select **'Show Aux'**.

SELECT DATE RANGE

Range
15 Oct: Today

From
15/10/2024

To
15/10/2024

You can also filter a predefined date range from the **'Range'** drop down or edit the **'From'** and **'To'** dates to manually select a specific time frame.

WORKING HOURS RANGE

FROM
00 00

TO
23 59

EXPORT CONFIGURATION

Type
Website (Default)

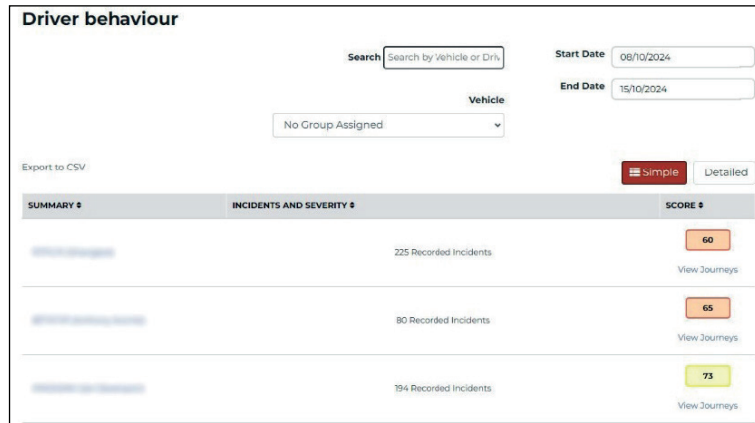
Generate Report

Under the **'Working Hours Range'**, you can select a time range to run the report to, giving you journeys within this time frame. Then you can select the format of the report in the dropdown menu under **'Export Configuration'**. This can be either your internet browser or a specific file type. Once you have filled out this page, select **'Generate Report'** to run the report.

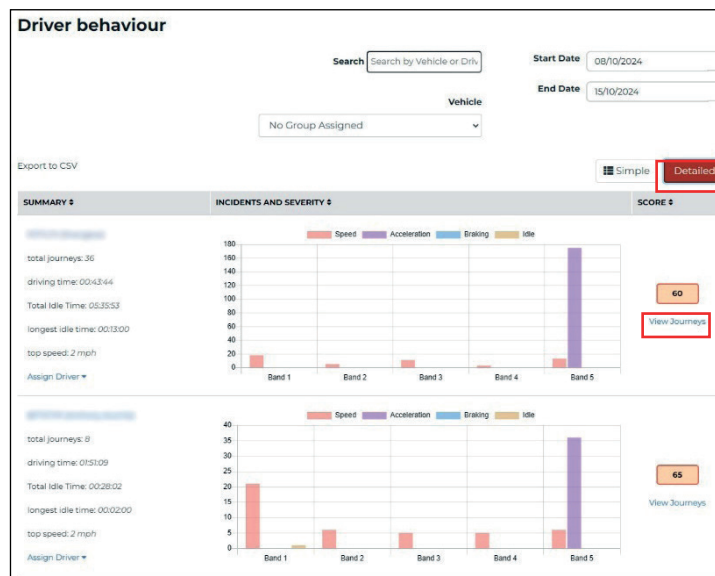
5.2 DRIVER BEHAVIOUR

This gives you a breakdown of how the vehicles on your account have been driven, showing the number of occasions; the speed limit has been broken, the vehicle has accelerated harshly, the vehicle has braked harshly, and the vehicle has been idling excessively. This accumulates to give a score out of 100.

In the left menu bar select **'Reporting'**, then select **'Driver'** and fill out as below:

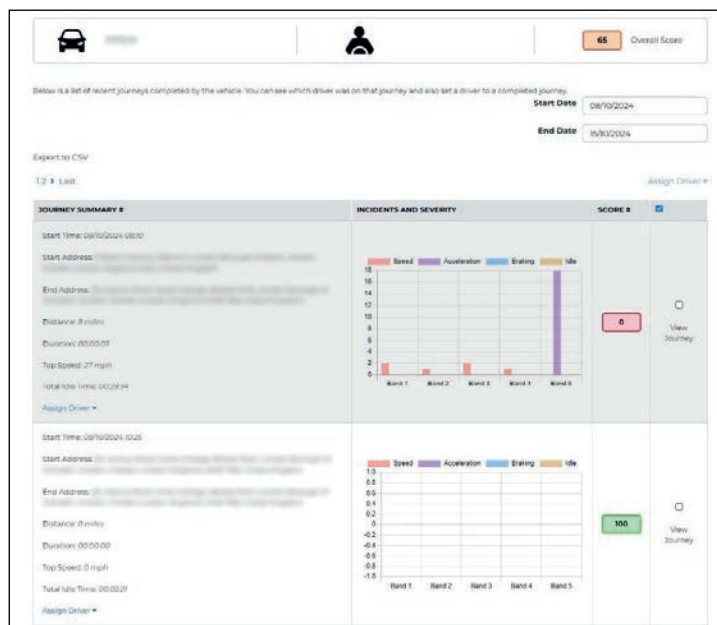


This is the first page that opens when you select the **'Driver'** report. It gives you a summary of every vehicle, how many recorded incidents of poor driving there has been within the set date period and the average score across all these journeys.



You can then select **'Detailed'** on the right side, this will then give you more information on exactly what has been going on, what the driver has been doing to gain the overall score for the set date period. If you hover over each bar in the chart, it tells you how many incidents there have been within each band. This is still just the overall score for the date period. If you then select to **'View Journeys'** you can see more detail as shown on the next page.

Once **'View Journeys'** has been selected you get a breakdown of the score for each journey, you can also see details of the route this occurred on and where the incidents happened. This is a useful tool for auditing Drivers. On the right is a breakdown of what everything means.



Breakdown of Terminology

Speed:

- Band 1: 10%-18% Over Speed Limit. Score: 0.25
- Band 2: 18%-24% Over Speed Limit. Score: 0.50
- Band 3: 24%-32% Over Speed Limit. Score: 0.75
- Band 4: 32%-40% Over Speed Limit. Score: 2
- Band 5: 40% or more Over Speed Limit. Score: 5

Acceleration:

- Band 1: Exceeded 1.79 m/s. Score: 0.20
- Band 2: Exceeded 2.24 m/s. Score: 0.50
- Band 3: Exceeded 2.68 m/s. Score: 2
- Band 4: Exceeded 3.13 m/s. Score: 4
- Band 5: Exceeded 3.58 m/s. Score: 10

Braking:

- Band 1: Decrease of 2.24 m/s. Score: 0.50
- Band 2: Decrease of 3.13 m/s. Score: 2
- Band 3: Decrease of 4.02 m/s. Score: 4
- Band 4: Decrease of 4.92 m/s. Score: 10
- Band 5: Decrease of 5.81 m/s. Score: 20

Idle:

- Band 1: 1-2 Mins Idling
- Band 2: 2-4 Mins Idling
- Band 3: 4-8 Mins Idling
- Band 4: 8-12 Mins Idling
- Band 5: 12+ Mins Idling

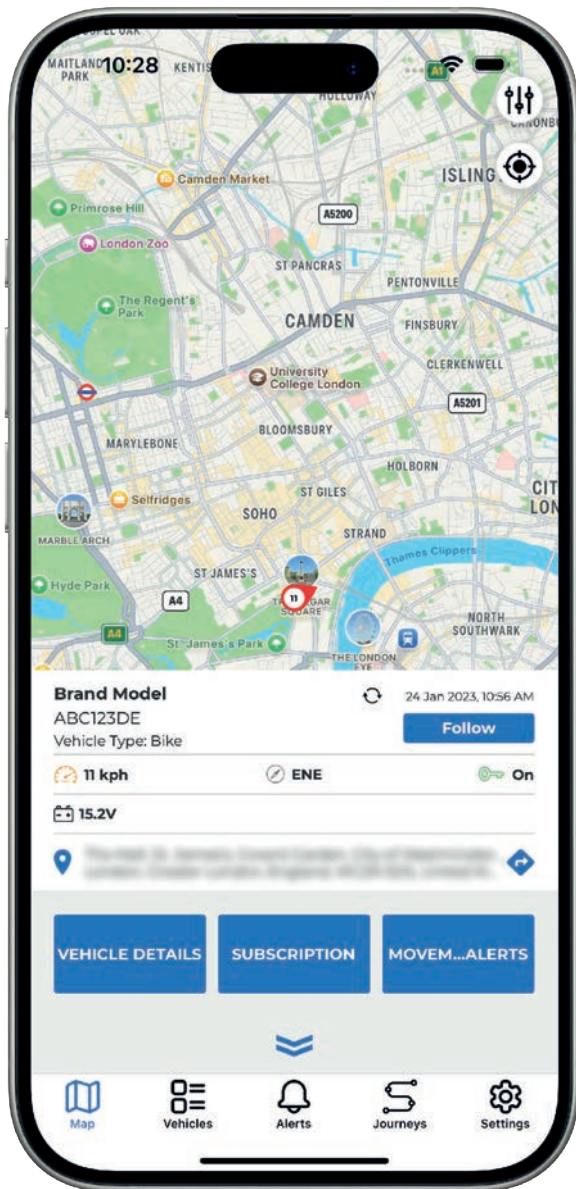
***Idle Scores don't count
towards Total Score**

Total Score: Calculated by adding Speed, Acceleration and Braking scores together (total rounded to nearest whole number), dividing this by the Journey time (rounded to nearest whole number) and subtracting from 100.

6. SCORPIONTRACK APP

6.1 MOBILE APP OVERVIEW

The ScorpionTrack mobile app allows you to remotely access security, safety and convenience features all from one place, including managing your subscriptions, customisable alerts and modes. All these features can be customised to suit your needs as the user to make life on the road easier. The mobile app is available to download on Google Play and the Apple Store.



GPS Location

The mobile app allows you to see your vehicle's last known location as well as view a record of all the journeys the vehicle has taken.

Accurate Location

All units use advanced GPS, Galileo, and GLONASS satellite technology to determine your vehicle's location.

Battery Status

The ScorpionTrack mobile app offers a convenient way to monitor the battery of the vehicle in its current state. If your battery is low, it will notify you in advance to recharge the battery, as long as the battery alert has been manually set up as per 4.3.

Zero Speed and Privacy Mode

The ScorpionTrack app allows you to hide your live speed and current location for ultimate privacy. ScorpionTrack will only turn these features off in the event of theft.

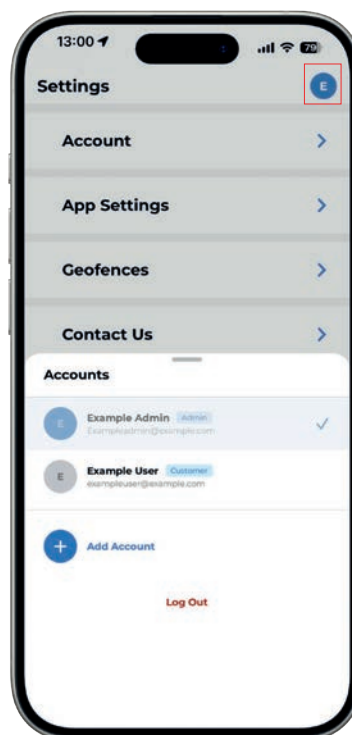
24/7/365 Monitoring

ScorpionTrack operates a 24/7 secure operating centre that will monitor your vehicle for possible theft. In the event of a theft, they will liaise with local police to recover your vehicle.

6.2 MULTIPLE USER ACCOUNT ACCESS

Our app features **multi-account support** which allows you to toggle between your personal accounts without the hassle of logging out and back in.

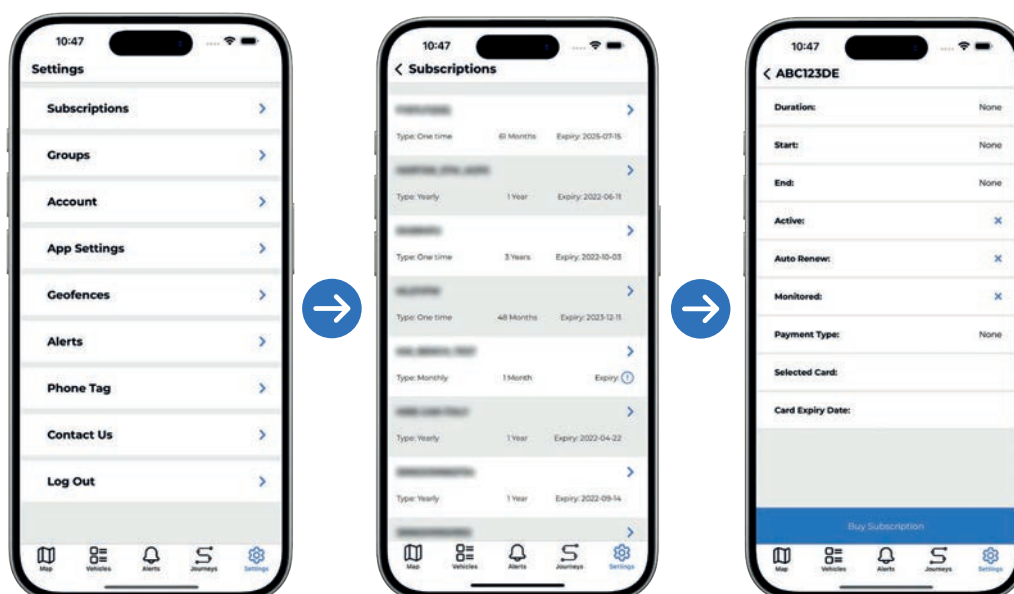
Simply tap your **profile icon** to reveal the account menu, where you can add new credentials or select an existing profile to switch accounts in seconds. This ensures your notifications and data stay organised, while keeping you connected across all your accounts within a few taps.



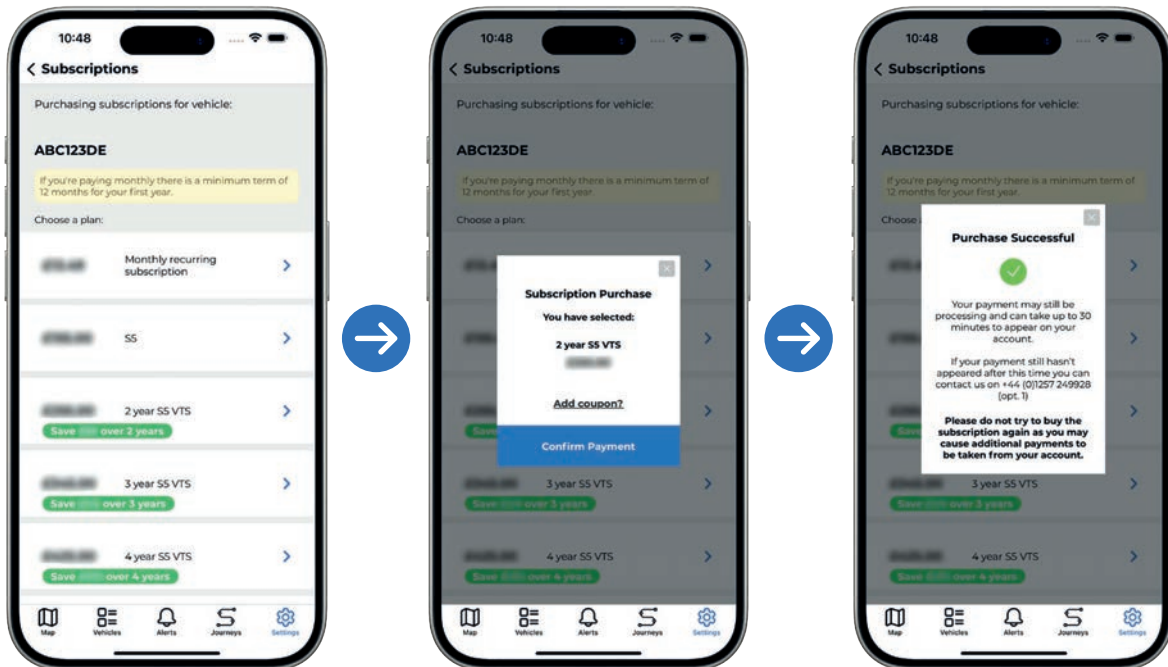
6.3 HOW TO MANAGE YOUR SUBSCRIPTION

From the ScorpionTrack mobile app, you can easily manage and purchase a subscription for any of the vehicles that you have registered on our system. To do this, you will need to go to into the app **'Settings'** on the bottom right of the screen and click on **'Subscriptions'**.

This will then bring you to a list of all your registered vehicles, which you can select each one to purchase a subscription for. For any vehicles that have an active subscription, the time length and expiry date is shown underneath your vehicle's registration.

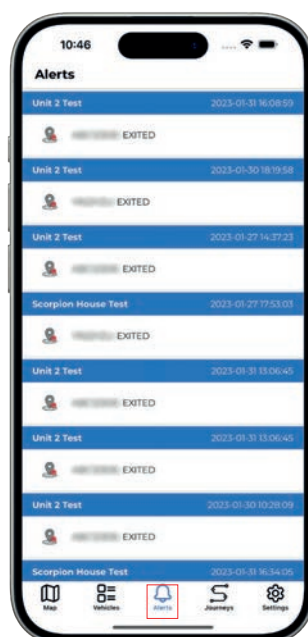


Once you've selected the vehicle you wish to purchase a subscription for, click the button labelled **'Buy Subscription'**. Then select the plan you want - we offer a range of subscriptions from monthly to a lifetime subscription which are available to select in the mobile app. Once you have selected the plan you want, press **'Confirm Payment'**. You will then need to switch your vehicle's ignition on for the monitoring subscription to become active.



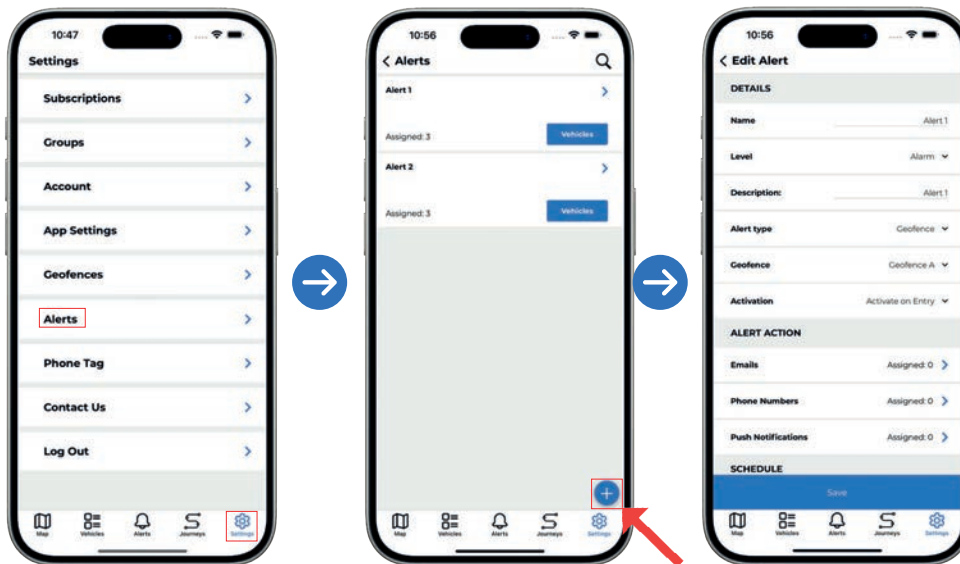
6.4 HOW TO MANAGE DASHBOARD ALERTS & MODES

To view any Dashboard Alerts that have been triggered on your vehicle, simply click on the **'Alerts'** button at the bottom of the screen and it will show a list of the different alerts that have been triggered, and also the date and time that the alert was triggered.



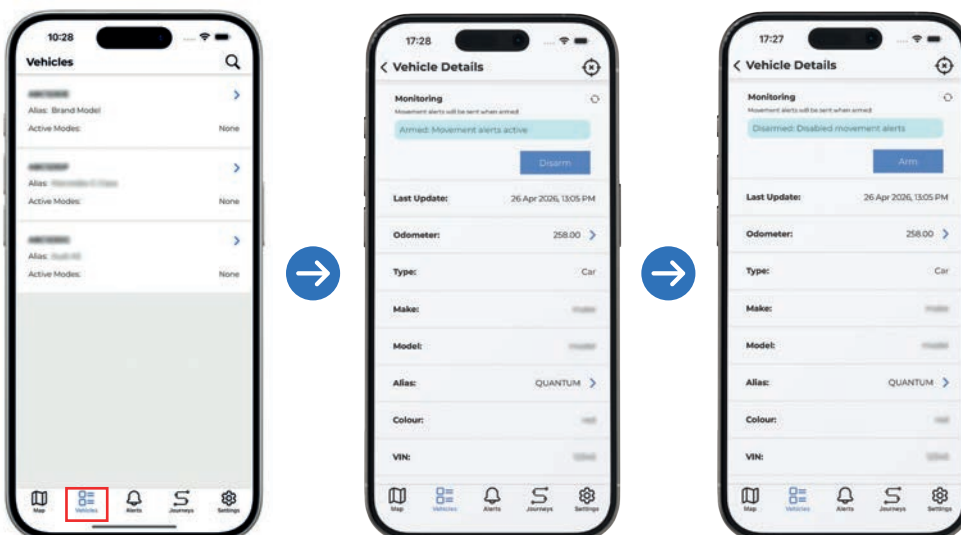
Additionally, you can create custom alerts in the mobile app in a similar way to creating an alert on the website. To create your custom alert, go into the **'Settings'** at the bottom of your screen and click **'Alerts'**.

Then click on the plus icon in the bottom right as shown in the below pictures to create an alert by naming it, giving it a description and selecting the alert type. Add the contact details you wish the alert to be sent to, such as your email address, mobile number for SMS (Text Bundle Payment Required) and app notification. Once you have filled out these details, press the **'Save'** button at the bottom of the screen.



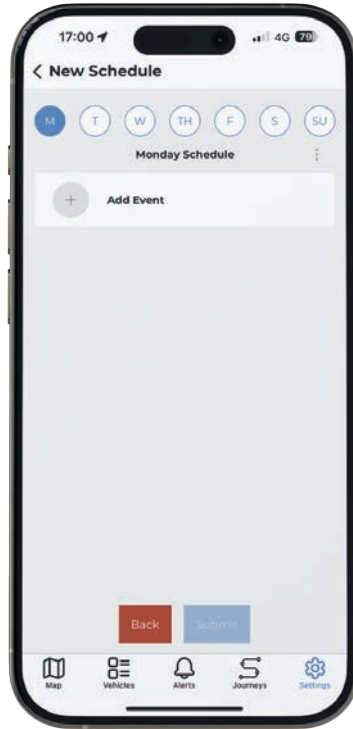
The ScorpionTrack app can also manage and customise modes, which will prevent triggering alarms and notifying the Vehicle Recovery team that your vehicle is moving if you are getting your vehicle transported or it is being serviced and may be moved around in a dealership.

To view and manage modes, click on the **'My Vehicles'** button at the bottom of the screen which will bring up a list of your vehicles registered to your account. Then select the vehicle that you wish to manage the modes for and scroll down the page to the **'Settings'** section. Here you can toggle on/off different modes if necessary. The main mode here being to Disarm and Arm the Monitoring of your vehicle. It should be disarmed when you are using the vehicle and Armed when it is parked up to help protect against theft.



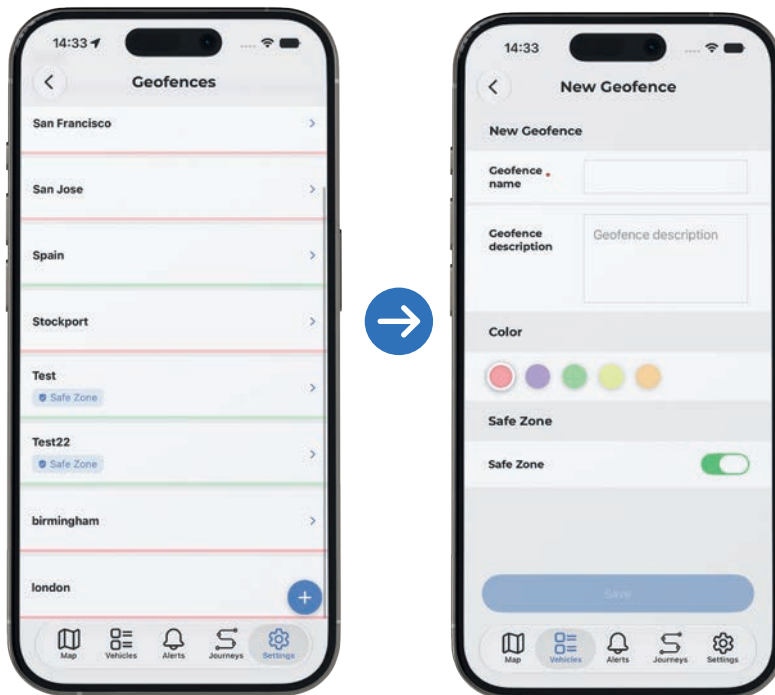
6.5 HOW TO SETUP ARMING SCHEDULES

To setup scheduled arming/ disarming of your S7 Adventure on the app, **Select Settings > Arming Schedules.**

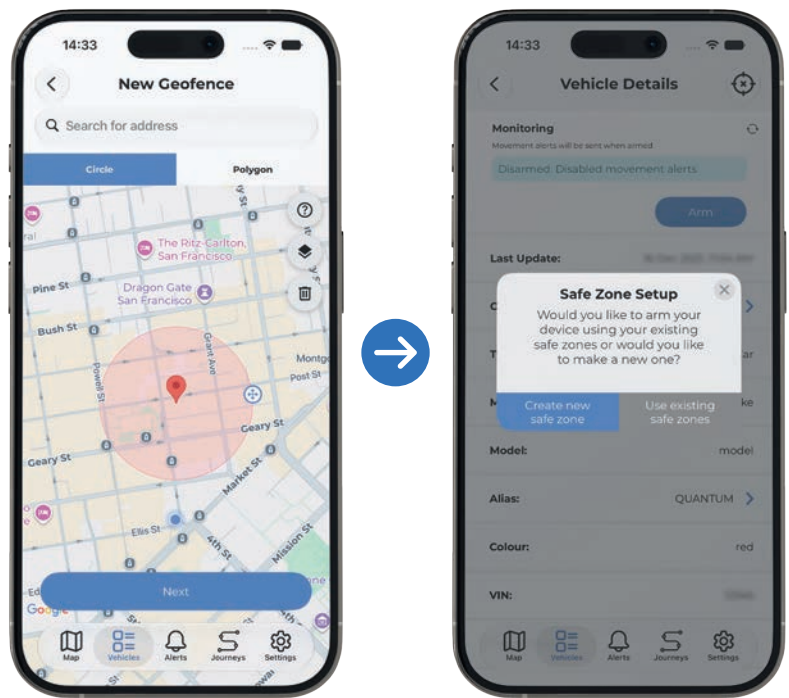


6.6 HOW TO SETUP SAFE ZONES

To arm your S7 Adventure, ensure you have at least one Safe Zone set up. You can create a Safe Zone under **'Settings' > 'Safe Zones'**.



Failure to set up a Safe Zone prior to arming your unit will result in a redirect page requiring you to create a new Safe Zone.



7. SPECIFICATIONS

7.1 TRACKER INTERNAL BATTERY

For a ScorpionTrack unit to operate if the vehicle battery is removed, the unit contains a **rechargeable battery**. Under normal circumstances this battery is charged whilst the vehicle is in use.

The battery has been specified to last a minimum of three years with average vehicle use. However, as with all rechargeable batteries, the lifespan will vary depending on how the battery is maintained and it may be necessary for the unit to be replaced if the internal battery develops an issue.

If your vehicle is to be stored for a long period of time, we strongly recommend the use of a battery charger to keep the vehicle's battery and therefore the tracking system battery in good condition. If the tracking unit internal battery is allowed to discharge completely, the tracking unit may require replacement and this would not be considered a warrantable defect. In the event of the internal battery suffering performance issues, please contact your ScorpionTrack dealer for assistance.

7.2 TROUBLESHOOTING

ScorpionTrack units contains no user serviceable parts and requires no regular maintenance. To verify that your unit is operating correctly, please log in to the ScorpionTrack website and confirm the vehicle location is correctly displayed on the live map.

The location is updated to the website every 2 minutes when the vehicle is being moved. If the vehicle location shown is incorrect, please move the vehicle outside for 1 minute continuously. If the location does not update in that time frame, contact your supplying dealer at the earliest opportunity.

7.3 WARRANTY

ScorpionTrack units are provided with a comprehensive **2-year warranty** in addition to your statutory rights, designed to combat any material or manufacturing defects which become apparent within 2 calendar years from the date of first installation. In the unlikely event of repairs being required under the provided warranty, please contact the installing dealer for assistance.

7.4 TERMS AND CONDITIONS

Use of the ScorpionTrack system is subject to the ScorpionTrack Terms & Conditions, with details of this available to view on our ScorpionTrack website. We recommend that you read this to gain a greater understanding of the provided service and the limitation of use.

Note: To find the Terms & Conditions, visit our website and scroll down to the very bottom of the page and click on the button labelled 'Terms & Conditions'.

8. CONTACTS

SALES ENQUIRIES

Email: sales@scorpionauto.com

Telephone: 01257 249 928

TECHNICAL ENQUIRIES

Email: technical@scorpionauto.com

Telephone: 01257 249 928

SUBSCRIPTION ENQUIRIES

Email: subscriptions-team@scorpionauto.com

Telephone: 01257 249 928

24/7 VEHICLE RECOVERY TEAM

Telephone: 01257 240 945

Note: please only call this number in the event of theft.

9. DECLARATION OF CONFORMITY

Declaration of Conformity is available on request, please email info@scorpionauto.com.



Battery Disposal Instructions:
Battery should not be disposed of with general household waste. Bring damaged or worn out batteries to your local recycling centre or dispose of them in battery recycle bins that can be found in store.



Fob should be kept out of the reach of children.



CONTACT US

Telephone: 01257 249 928

Email: sales@scorpiontrack.com

Website: www.scorpiontrack.com

Address: Scorpion Automotive, Scorpion House, Drumhead Road, Chorley
North Business Park, Chorley, England, PR6 7DE

ScorpionTrack is a brand of Scorpion Automotive

SCORPION[®]
AUTOMOTIVE

© 2025 Scorpion Automotive Ltd. This document is not to be reproduced in whole or part without the prior written permission of Scorpion. Other product and company names referenced herein are trademarks of their respective owners. This Scorpion product and service is subject to the Terms and Conditions of Sale available from the Scorpion Automotive website at: www.scorpionauto.com